

## Rab35(Q67L)

**Catalog Number:** 10133

**Synonyms:** Member RAS oncogene family, RAY,H-ray, RAB1C

**Background:** The Ras super-family of small GTP-binding proteins, which includes the Ras, Ral, Rho, Rap, and Rab families, the Rab family appears to play a critical role in regulating exocytotic and endocytic pathways. RAB35 regulates the assembly of actin filaments during bristle development in *Drosophila* and filopodia formation in cultured cells.

**Amino Acid Sequence:** (1-201, Q67L)

MARDYDHLFKLLIIGDSGVGKSSLLLRFDNTFSG  
SYITTIGVDFKIRTVEINGEKVKLQIWDTAGLERFR  
TITSTYYRGTHGVIVVYDVTSAESFVNVKRWLHEI  
NQNCDDVCRILVGNKNDDPERKVVETEDAYKFAG  
QMGIQLFETSAKENVNVEEMFNCITELVLRAKKD  
NLAKQQQQQNDVVKLTKNSKRKKRCC

**Source:** Human, recombinant full length, His<sub>6</sub>-tag

**Expression Host:** *E. coli*

**Molecular Weight:** 23 kDa

**Purity:** > 98% by SDS-PAGE

**Constituents:** 20 mM Tris-HCl, pH 8.0, 150 mM NaCl.

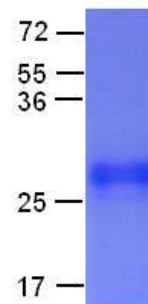
**Physical Appearance:** White or clear

**Concentration:** 1 mg/mL

**Storage:** -80°C

## Preparation Instructions

Adding of 10 mM  $\beta$ -mercaptoethanol or 1 mM DTT into the solution to protect the protein is recommended and using of non-ionic detergents such as n-Dodecyl  $\beta$ -D-maltoside (DoDM) or polyethylene detergents (e.g. C<sub>12</sub>E<sub>10</sub>) also help to stabilize the protein. Avoid repeated freezing and thawing.



The purity of His-tagged Rab35(Q67L) was determined by SDS-PAGE and Coomassie Brilliant Blue Staining.

## References

1. Zhang, J. et al., *Science* 325: 1250-1254, 2009.
2. Zhu, A. X. et al., *Biochem. Biophys. Res. Commun.* 205: 1875-1882, 1994.

FOR RESEARCH USE ONLY. NOT FOR DIAGNOSTIC APPLICATIONS